

SHARP

8M-B32C1 Dismantle Instruction



LCD MONITOR

MODEL 8M-B32C1

Dismantle Instruction

Table of contents

1. Scope.....	3
2. Tools for dismantling.....	3
3. Dismantle Procedure	3
4. Stand, Back cover and PWB Plate	4
5. Printed circuit boards	8
6. Battery.....	9
7. LCD Module	10
8. Capacitors.....	11
9. Parts List	12

1. Scope

This document describes dismantling instruction according to Annex VII of Directive 2012/19/EU.

2. Tools for dismantling

Below tools are required to dismantle this product.

- Screw Driver
- Nipper

3. Dismantle Procedure

This product can be dismantled by below steps.

1. Remove Stand, Back cover and PWB Plate (section 4)
2. Remove Printed circuit boards (section 5)
3. Remove Battery (section 6)
4. Dismantle LCD (section 7)
5. Remove Electrolyte Capacitors (section 8)

4. Stand, Back cover and PWB Plate

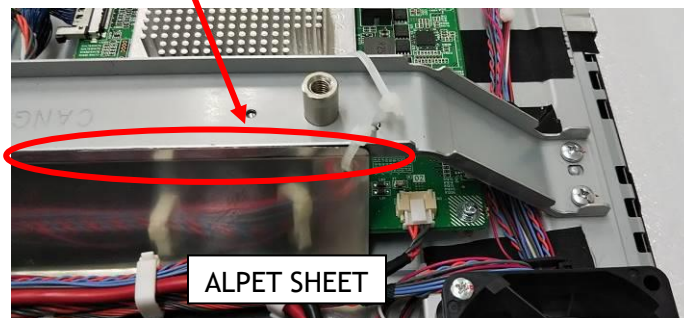
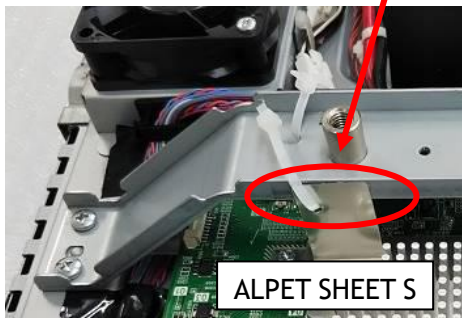
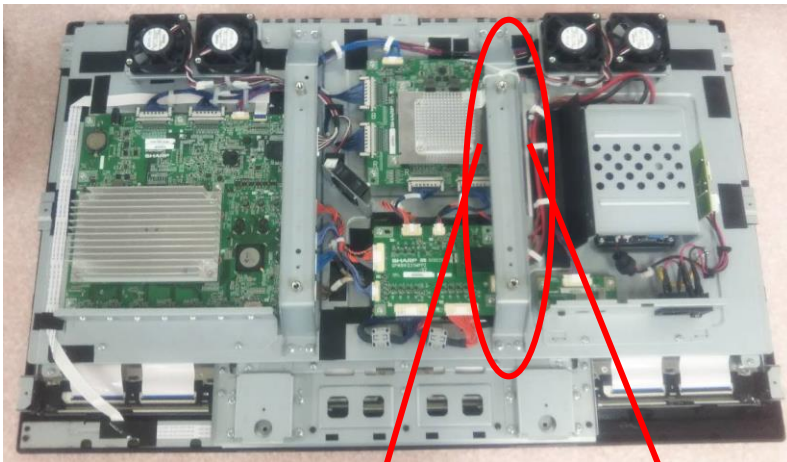
Stand can be removed with screw driver.

Remove SCREW COVER SEAL on back cover.

Then back cover can be removed with screw driver.



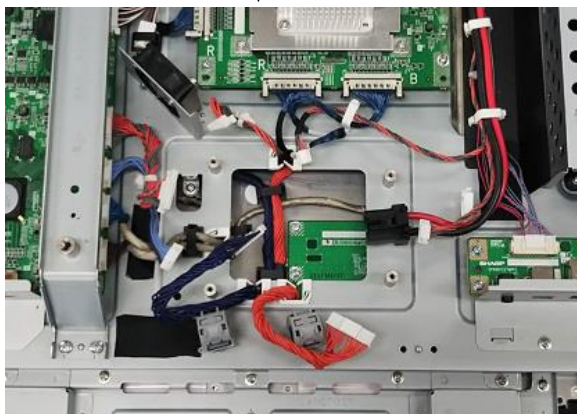
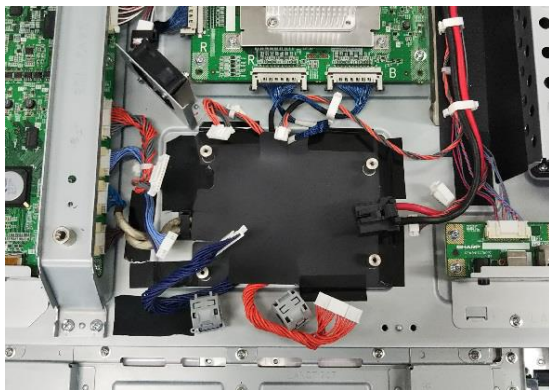
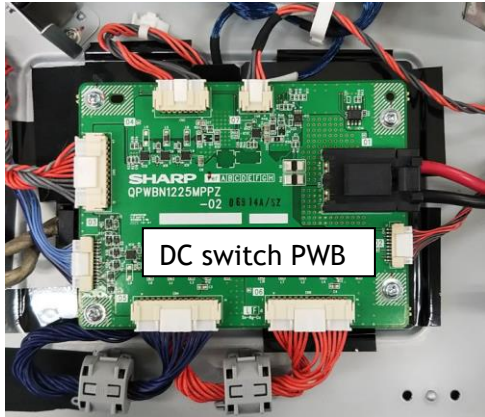
Cut the cable tie on VESA angle with nipper, and peel off ALPET SHEET and ALPET SHEET S.
Then remove VESA angle with screw driver. (right side in back view)



Detach the cables from DC switch PWB and remove the PWB with screw driver.

Remove WIRING SHEET (Black PC sheet) from PWB Plate.

Release all the cables that runs through the plate aperture. (cables from beneath the plate).



Detach Key-FFC from the connector on Main I/F PWB

Release from wire holders and remove the fixing tape on PWB Plate.



Then PWB Plate can be removed with screw driver.

(When the plate is lifted up, cables should go through the aperture of plate)

5. Printed circuit boards

All PWBs can be removed by screw driver.



Main I/F PWB (1pcs)



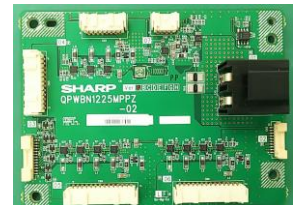
Power PWB (1pcs)



LED Driver PWB (2pcs)



UCCT PWB (1pcs)



DC switch PWB (1pcs)



Connector PWB (1pcs)



Varistor PWB (1pcs)



T-CON PWB (1pcs)

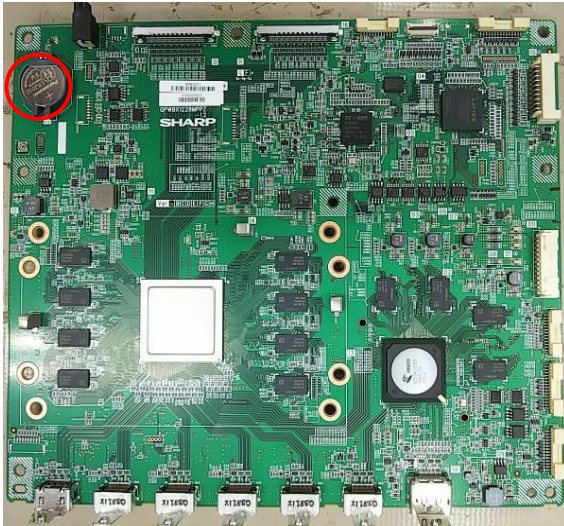


Key PWB (1pcs)

6. Battery

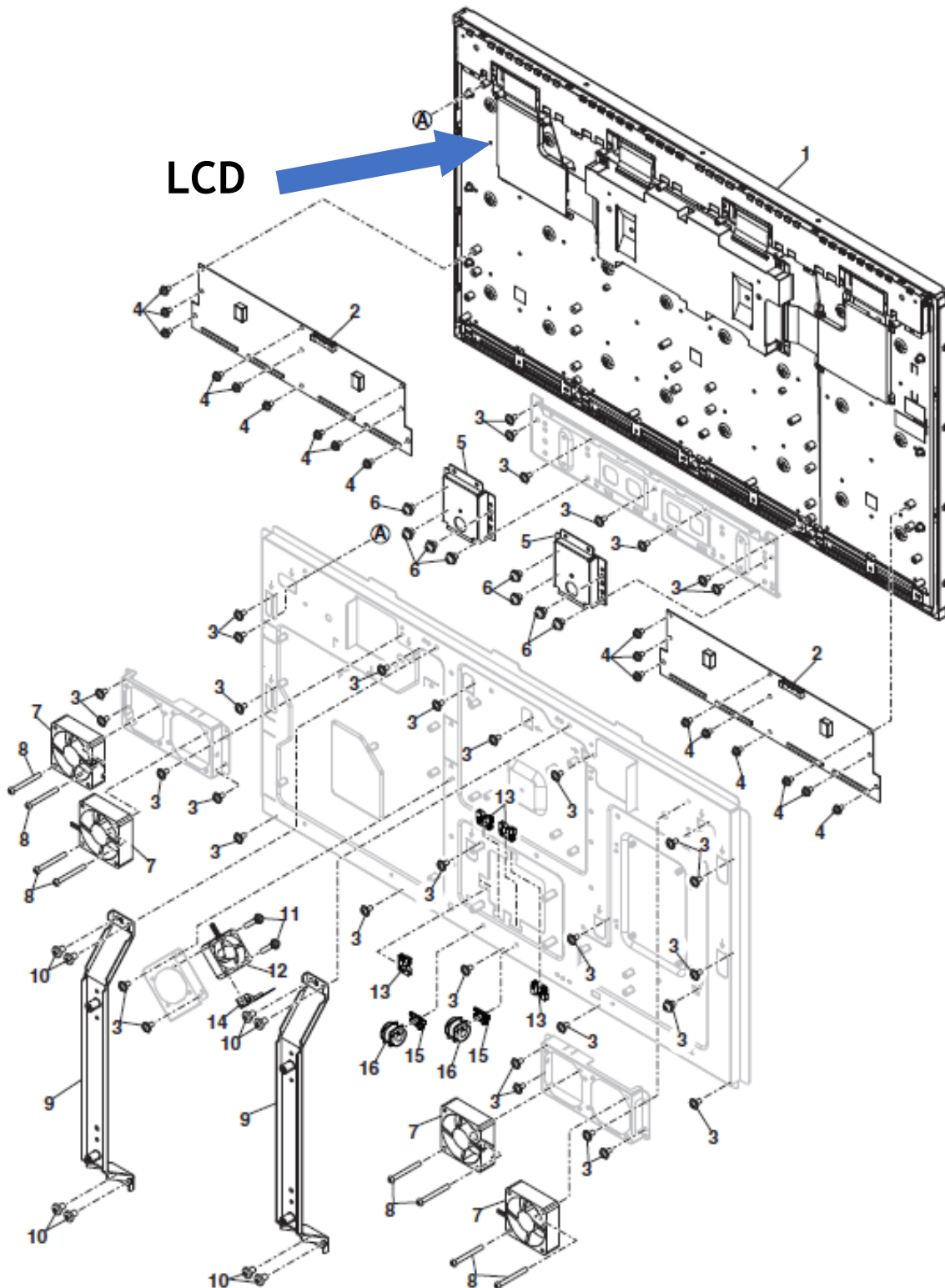
This model uses only CR2032 Lithium Coin battery on Main I/F PWB.

Battery CR2032 can easily be removed from the battery holder.



7. LCD Module

- LCD Dismantle procedure



8. Capacitors

Electrolyte Capacitors which diameter/height is larger than 25mm is installed on Power PWB.
These capacitors can be removed by using nipper to cut the leads.



On Power PWB

9. Parts List

Parts described in Annex VII of directive 2012/19/EU are as below.

Parts	Note
LCD	32inch LCD module
Printed Circuit Boards	Main I/F PWB Power PWB LED Driver PWB UCCT PWB DC switch PWB Connector PWB Key PWB Varistor PWB T-CON PWB
Battery	Lithium Coin Battery CR2032
Electrolyte capacitors (height >25mm, diameter >25mm)	On Power PWB
External electric cables	2 kinds of Power Cord - CEE 7 (for EU) - Type-BF (for UK)